

SITE PLAN APPROVAL
 This Site Plan received Final Approval by the Simsbury Zoning Commission.

Signature _____ Chairman Date _____

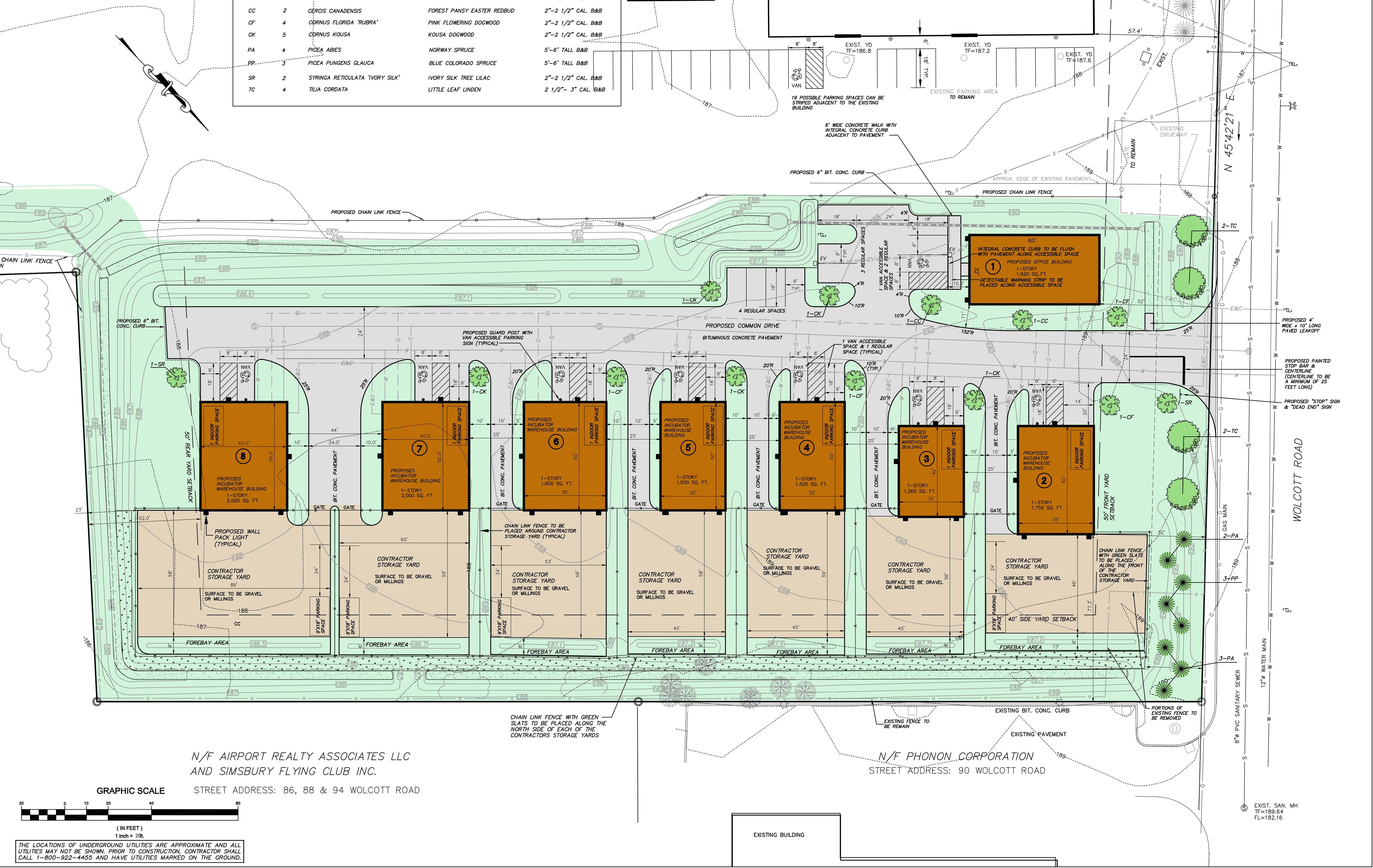
Date of Final Approval _____

In accordance with CGS 8-3 (1), all work in connection with this Site Plan shall be completed by _____ (five years of the date of approval)

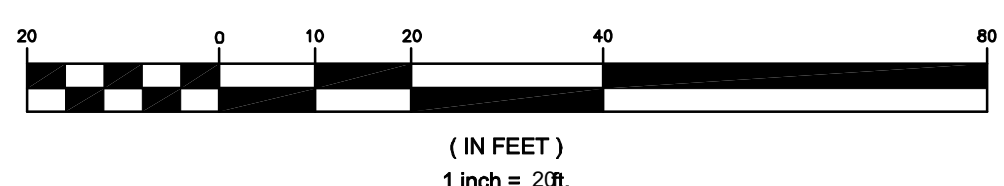
PLANT LIST -

NOTES:
 1. IF ANY DISCREPANCIES OCCUR BETWEEN THE AMOUNTS SHOWN ON THE PLAN AND THE PLANT LIST, THE PLAN SHALL DICTATE.
 2. PROPOSED PLANTING BEDS SHALL BE EXCAVATED TO A DEPTH OF 12 INCHES AND FILLED WITH A MIXTURE OF 80% TOPSOIL AND 20% PEAT MOSS. ALL PLANTING BEDS SHALL BE MULCHED WITH 4 INCHES OF 3/4 STONE, WOOD CHIPS OR WOOD BARK MULCH.
 3. ADJUSTMENTS IN THE LOCATION AND/OR NUMBER OF PROPOSED PLANTS MAY BE NECESSARY DUE TO FIELD CONDITIONS. SUCH ADJUSTMENTS SHALL BE APPROVED BY THE DESIGN ENGINEER AND THE TOWN PLANNER.
 4. A FLOWERING TREE SHALL MEASURE FOUR TO FIVE FEET OR MORE IN HEIGHT TO THE BASE OF THE LEADER.

SYMBOL	QUANTITY	BOTANICAL NAME	COMMON NAME	SIZE (MINIMUM)
CC	2	CERCIS CANADENSIS	FOREST PANSY EASTER REDBUD	2"-2 1/2" CAL. B&B
CF	4	CORNUS FLORIDA 'RUBRA'	PINK FLOWERING DOGWOOD	2"-2 1/2" CAL. B&B
CK	5	CORNUS KOUSA	KOUSA DOGWOOD	2"-2 1/2" CAL. B&B
PA	4	PICEA ABIES	NORWAY SPRUCE	5'-6' TALL B&B
BP	3	PICEA PUNGENS GLAUCA	BLUE COLORADO SPRUCE	5'-6' TALL B&B
SR	2	SYRINGA RETICULATA 'IVORY SILK'	IVORY SILK TREE LILAC	2"-2 1/2" CAL. B&B
TC	4	TILIA CORDATA	LITTLE LEAF LINDEN	2 1/2"- 3" CAL. B&B

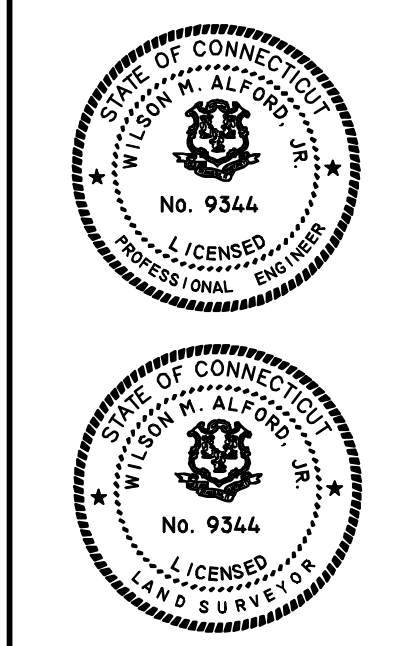


N/F AIRPORT REALTY ASSOCIATES LLC
 AND SIMSBURY FLYING CLUB INC.
 STREET ADDRESS: 86, 88 & 94 WOLCOTT ROAD



THE LOCATIONS OF UNDERGROUND UTILITIES ARE APPROXIMATE AND ALL UTILITIES MAY NOT BE SHOWN. PRIOR TO CONSTRUCTION, CONTRACTOR SHALL CALL 1-800-922-4455 AND HAVE UTILITIES MARKED ON THE GROUND.

REVISION	DATE
3-6-26	INCORPORATED TOWN ENGINEER'S COMMENTS DATED 12-17-25
11-19-25	REVISED PROPOSED LAYOUT AND IMPROVEMENTS



TO THE BEST OF MY KNOWLEDGE AND BELIEF THIS MAP IS SUBSTANTIALLY CORRECT IN ACCORDANCE WITH CLASS AS DEFINED BY C.A.L.S.

L.S. No. 9344
 NOT VALID WITHOUT A LIVE SIGNATURE AND EMBOSSED SEAL
Alford ASSOCIATES, INC.
 CIVIL ENGINEERS
 WINDSOR, CONNECTICUT
 WILSON H. ALFORD, JR., P.E. & L.S.

DATE: MARCH 14, 2025
 SCALE: 1 IN. = 20 FT.

SITE PLAN
 PREPARED FOR
COMPASS ENTERPRISES, INC.
 PROPOSED LAYOUT AND LANDSCAPING PLAN
 SIMSBURY, CONNECTICUT
 80 WOLCOTT ROAD

Sheet
 2