

22 Morgan Farms Dr, South Windsor, CT 06074

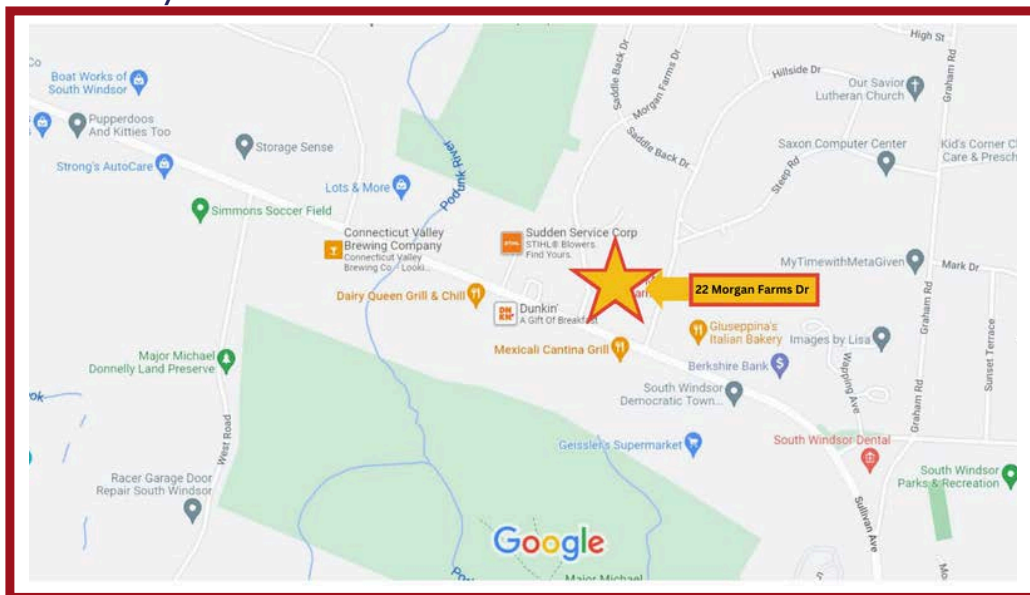
For Lease 2,700 SF of Office/Medical Space



- High traffic location
- Ample free parking available
- Lots of natural light
- Pylon sign
- Great visibility/street presence
- Wi-Fi
- Air Conditioning
- Private restrooms
- Medical Use Preferred

PROPERTY OVERVIEW

Great location for Medical Offices on highly trafficked Sullivan Avenue in South Windsor. Two spaces currently available (1166 SF & 1564 SF) that could be expanded for approximately 2700 sf total. Come join Feehan Hearing Center and Conroy & MacGilpin Orthodontics at 22 Morgan Farms Drive in South Windsor, CT. The property has a good size parking lot with multiple spaces available. Handicapped accessible first floor offices. Nice picnic area in the back for employee use. Beautiful canopy covered front exterior area for your clients. Price is negotiable based on space rented and tenant improvements necessary. Medical use preferred. Request a virtual or in-person tour today.



Great people, solid investments, integrity and creativity in real estate transactions.

Teodora Rotaru 860-796-5618
Daniel Rosow 860-783-5262

teo@reagne.com

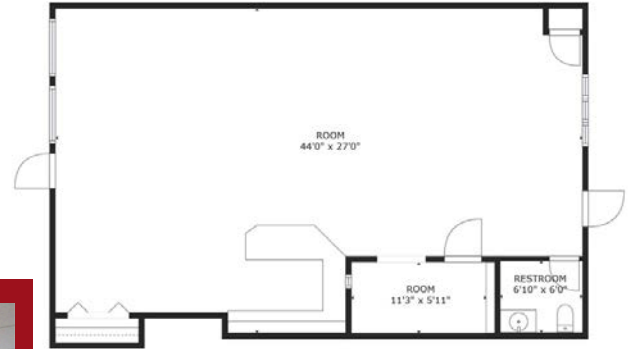
Commercial Real Estate

REAG^{NE}
REAL ESTATE ADVISORY GROUP LLC

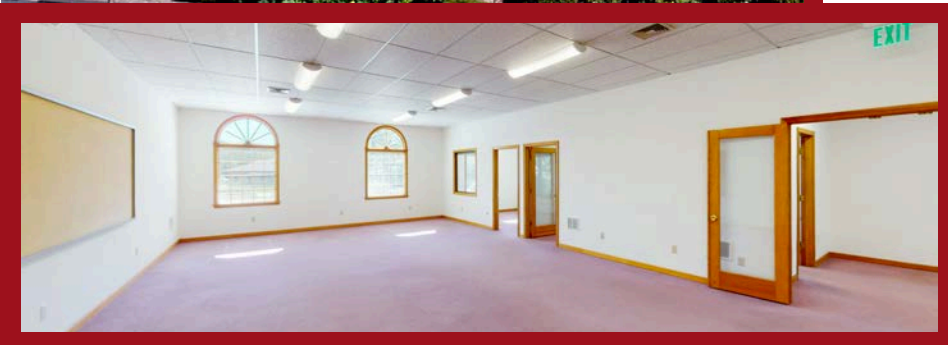
www.reagne.com

22 Morgan Farms Dr, South Windsor, CT 06074

For Lease 2,700 SF of Office/Medical Space



- 1,166 SF
- Expansion possibility up to 2700 SF
- Negotiable Rate
- \$25.00 /SF/YR NNN



- 1,530 SF
- Expansion possibility up to 2700 SF
- Negotiable Rate
- \$25.00 /SF/YR NNN

Great people, solid investments, integrity and creativity in real estate transactions.

Teodora Rotaru 860-796-5618
Daniel Rosow 860-783-5262

teo@reagne.com

Commercial Real Estate

REAG^{NE}
REAL ESTATE ADVISORY GROUP LLC

www.reagne.com