

# 22 Morgan Farms Dr, South Windsor, CT 06074

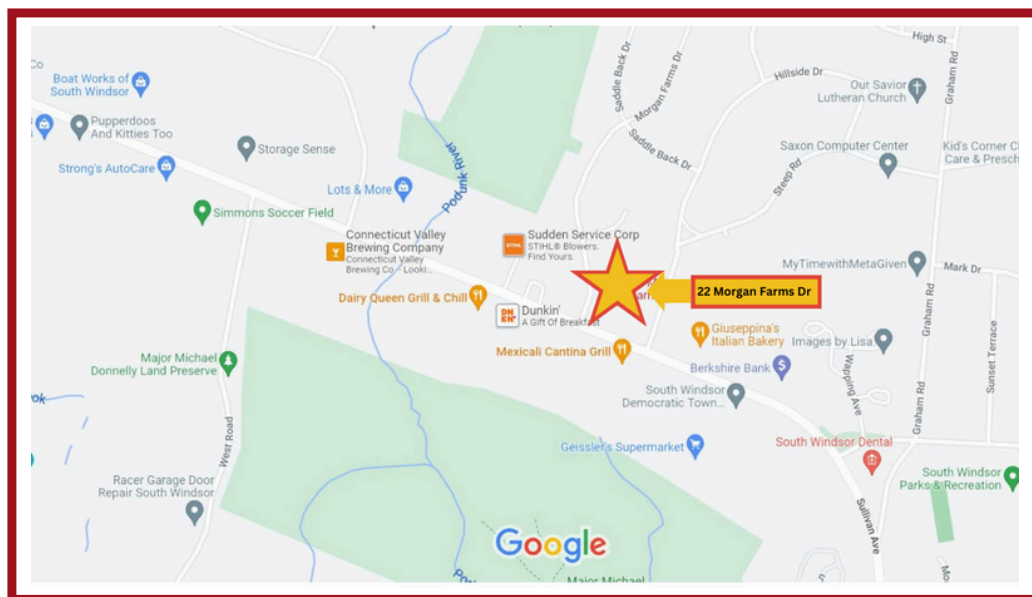
For Lease 1,166 SF and 4,200 SF of Office/Medical Space



- High traffic location
- Ample free parking available
- Lots of natural light
- Pylon sign
- Great visibility/street presence
- Wi-Fi
- Air Conditioning
- Private restrooms
- Medical Use Preferred

## PROPERTY OVERVIEW

Great location for Medical Offices on highly trafficked Sullivan Avenue in South Windsor. Two spaces currently available (1166 SF & 4200 SF). Come join Feehan Hearing Center and Novella Infusions at 22 Morgan Farms Drive in South Windsor, CT. The property has a good size parking lot with multiple spaces available. Handicapped accessible first floor offices. Nice picnic area in the back for employee use. Beautiful canopy covered front exterior area for your clients. Price is negotiable based on space rented and tenant improvements necessary. Medical use preferred. Request a virtual or in-person tour today.



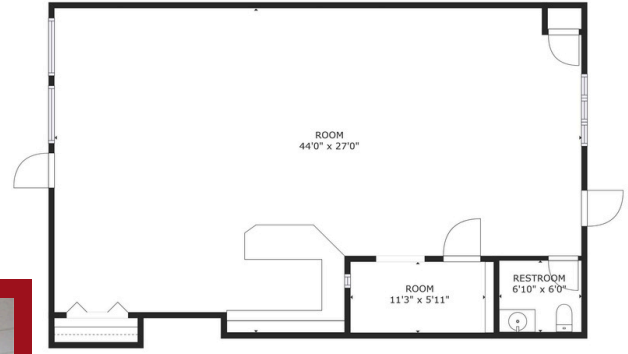
*Great people, solid investments, integrity and creativity in real estate transactions.*

**Teo Rotaru** 860-796-5618  
**Belinda Sadiku** 860-378-4732  
**info@reagne.com**

**REAG<sup>NE</sup>**  
COMMERCIAL REAL ESTATE

**22 Morgan Farms Dr, South Windsor, CT 06074**

## For Lease 1,166 SF and 4,200 SF of Office/Medical Space



- 1,166 SF
- Negotiable Rate
- \$25.00 /SF/YR NNN



- 4,200SF
- Negotiable Rate
- \$25.00 /SF/YR NNN

*Great people, solid investments, integrity and creativity in real estate transactions.*

**Teo Rotaru                      860-796-5618**

**Belinda Sadiku 860-378-4732**

**info@reagne.com**

